

# Community Design Charrette - June 23, 2010

## Concept Plans Lockport Secondary Plan and Traffic Management Study

### "Lockport Destination Community"

A vision for Lockport by charrette work groups 3 and 4

**Signalized Pedestrian Crossing to Increase Accessibility and Safety**



**Promote a Connected Community by Linking East and West Lockport across the St. Andrews Lock and Dam**

**"Locks" Interpretive Centre**  
Create a museum dedicated to the St. Andrews Lock and Dam and Red River.

**Melody Lane and Condo Access Road**  
Better traffic control at the corner between Melody Lane and the Condo road would increase safety. A well designed internal road system would improve safety and circulation, especially if access and parking are restricted on PTH 44 and PR 204.

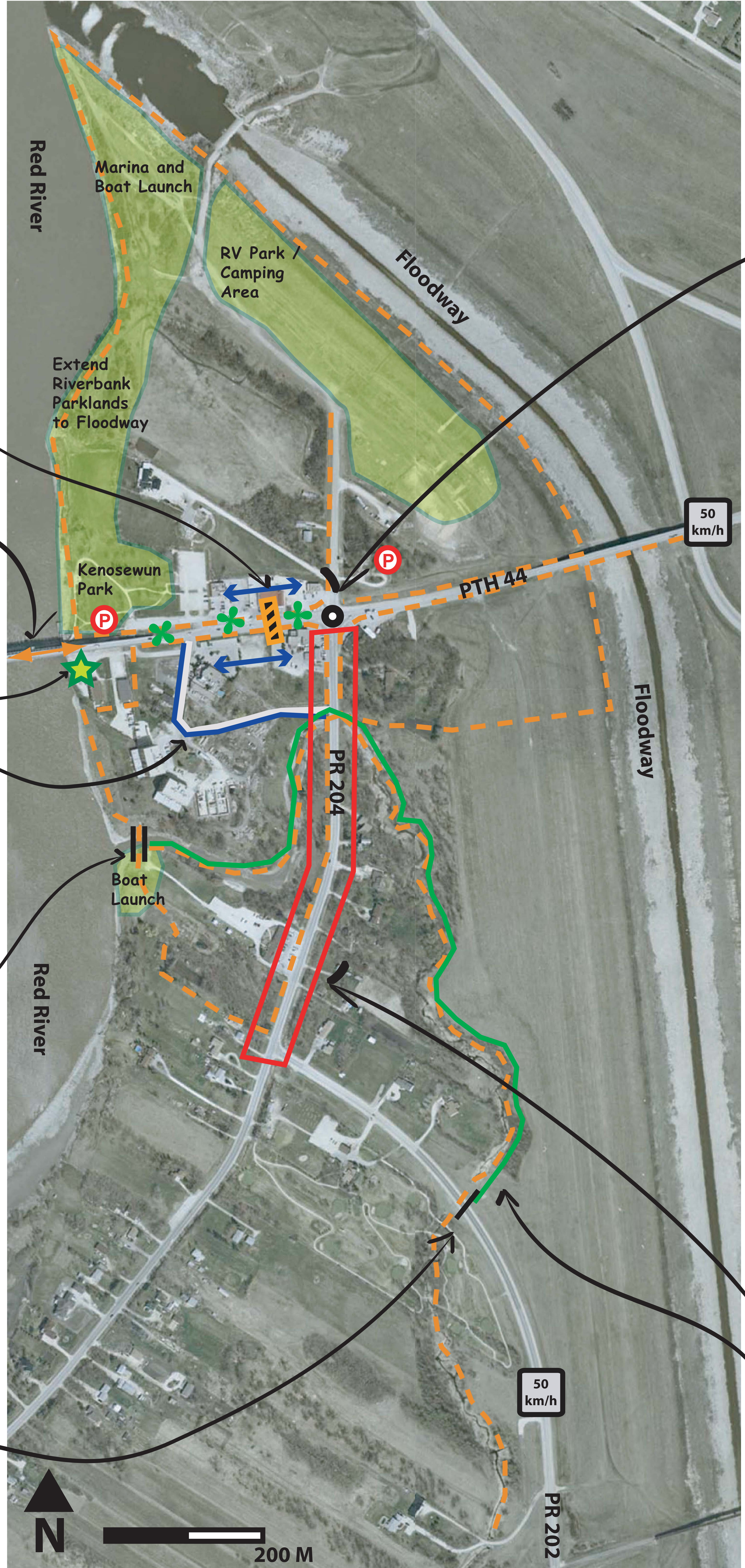
**Pedestrian/Cycling Bridge**

**Main Street Design Concept and Guidelines**

A coordinated streetscaping program will create an increased sense of place and promote Lockport as a regional destination in Manitoba.



**Culverts Insufficient**



**Expand Parking to Accommodate Visitors and New Growth**




**Roundabout**  
Slow traffic and make Lockport a safe place for vehicles and pedestrians. This would also be the first roundabout in Manitoba outside of Winnipeg!



**Pedestrian / Cycling Paths**  
These include dedicated multi-purpose paths and trails and sidewalks and bike lanes along streets.

**Reconnect Parking Lots**  
At one time parking lots were interconnected, which provided convenient circulation. Recently parking lots have been separated requiring the use of PTH 44 and PR 204 for vehicle circulation.



**No Street Parking on PR 204**

**Designate Guun's Creek as a Wildlife Refuge**

**50 km/h Limit Should Begin Before Entering Lockport**

