



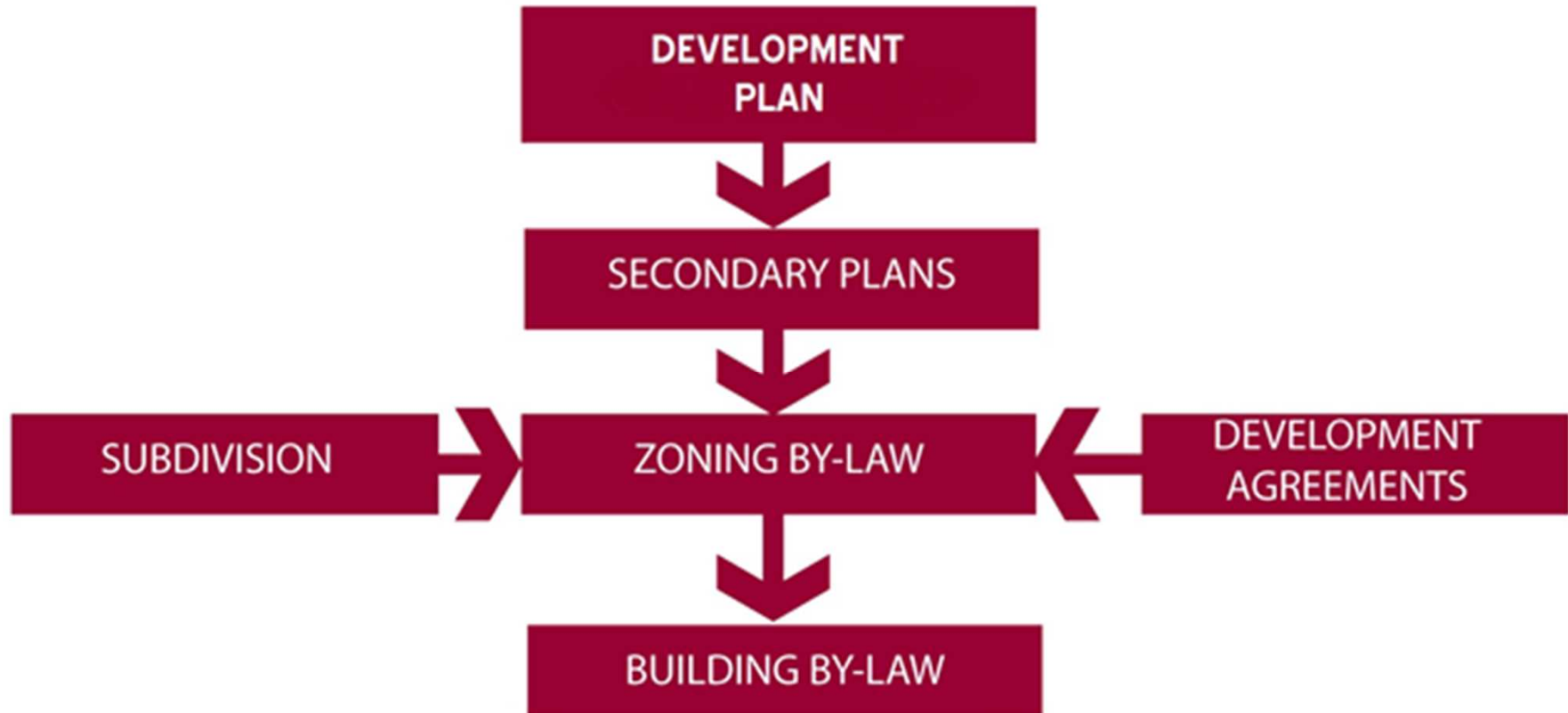
South St. Andrews Secondary Plan



What are Secondary Plans?

- Policy documents that are used to guide the development or redevelopment of specific areas.
- They provide specific policies for areas where more detailed directions for land use, infrastructure, transportation, the environment, urban design or similar matters are required beyond the general framework provided by the Development Plan.

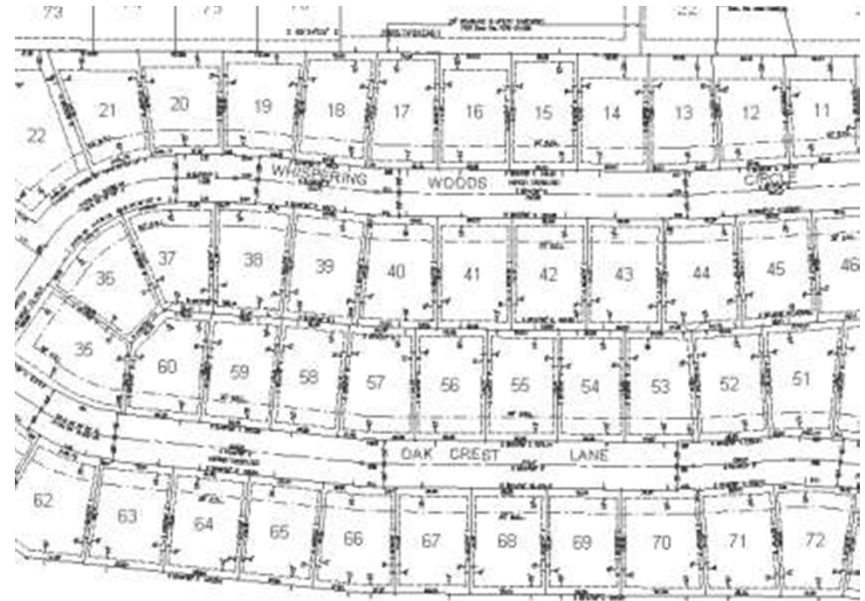
Where do Secondary Plans fit?



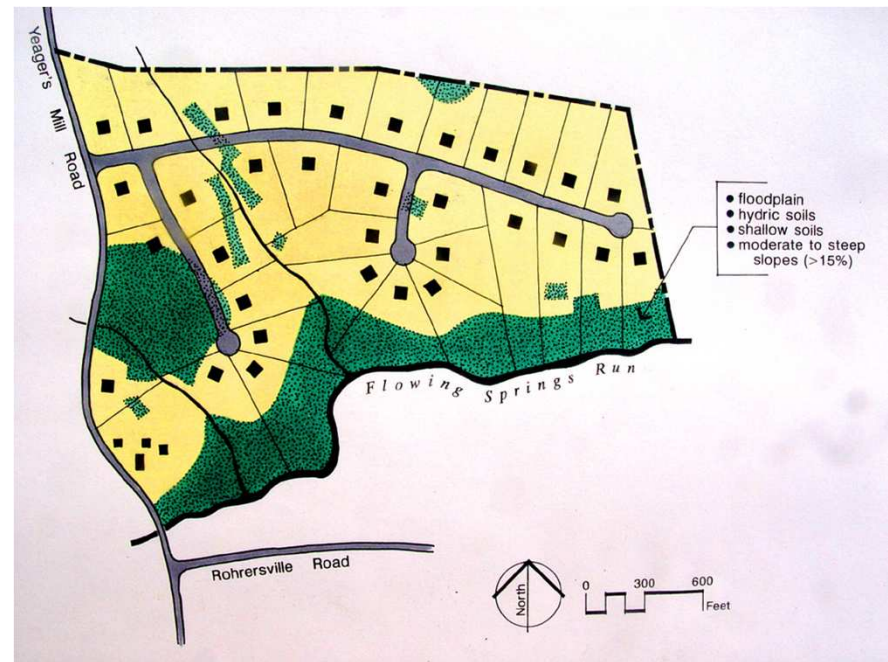
Why are Secondary Plans Important?

- They provide a process and a framework for addressing planning issues affecting or characterizing specific areas.
- They strengthen existing developed areas and facilitate, where desirable, appropriate and orderly development or redevelopment.
- They ensure the orderly, efficient and appropriate development of vacant or underutilized land.
- They ensure that desirable characteristics of an area are protected and enhanced.

What can they do? They can make the ordinary....



Extraordinary!



They can...



Incorporate Design Guideline



Establish Pathways and Connectivity



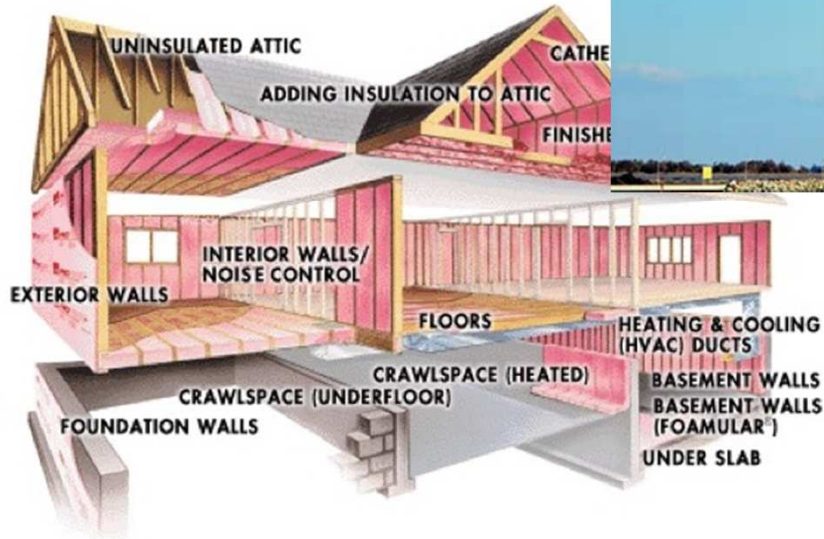
Encourage Retail Options



Promote Mixed Use Development



Support Community Sustainability



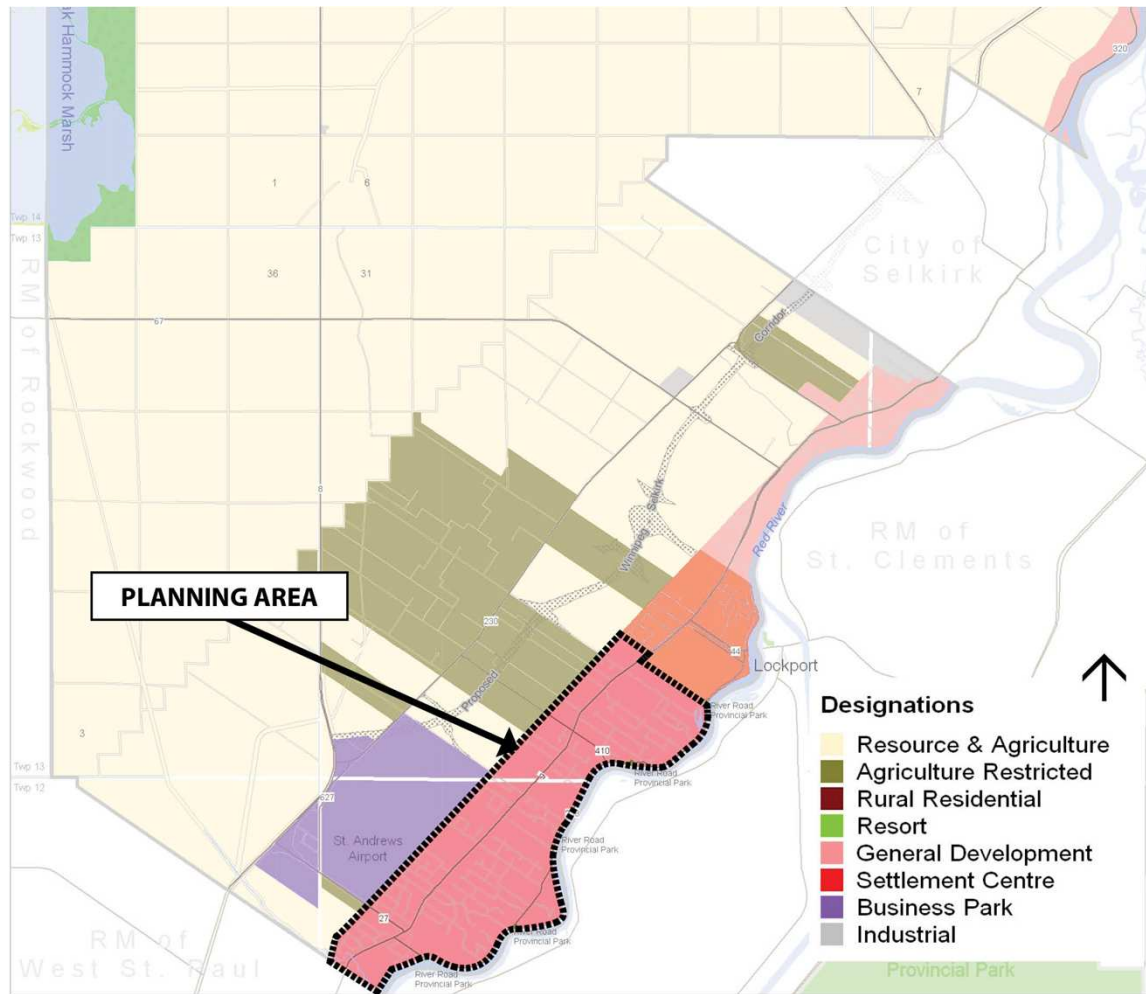
Project Work Plan and Timeline

- Winter 2010/2011: Finalize Background Report
- March 2010: Start-up Meeting with Steering Committee
- Spring 2011: Send out Newsletter/Post On-line Survey
- Spring 2011: Community Workshop
- Spring 2011: Draft Secondary Plan
- Summer 2011: Present Draft to Steering Committee
- Summer/Fall 2011: Public Open House
- Fall 2011: Finalize Report Submitted

Planning Area



Planning Area



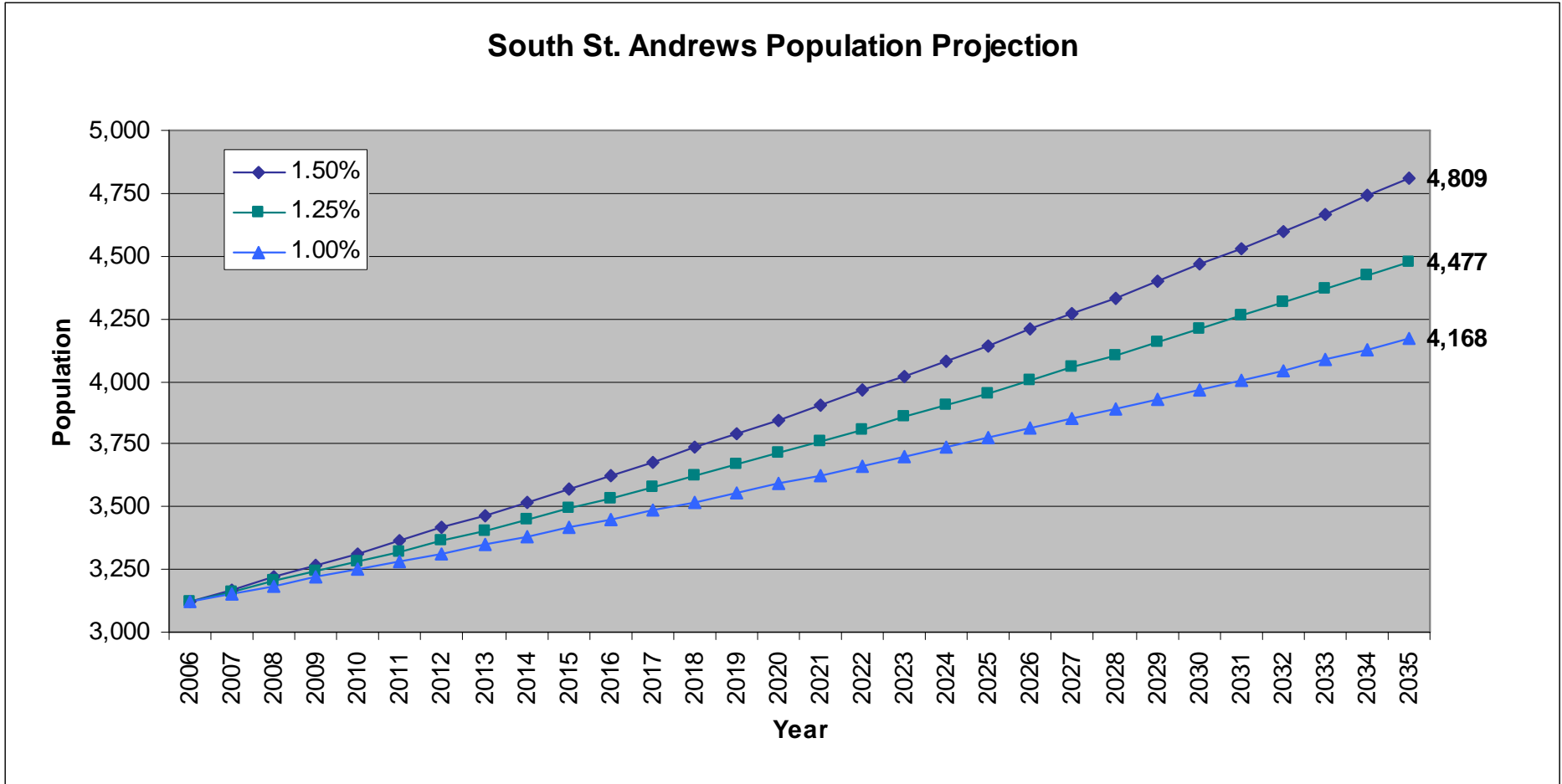
Assumptions and Limitations of the Secondary Plan

- This is a concept plan, not a detailed design.
- Connections will be made to West St. Paul and to the Lockport Secondary Plan.
- Boundaries for the Secondary Plan are set.

Planning Area Statistics

- Total Population of St. Andrews (2006): 11,359
- South St. Andrews Area: 3,123 (About 28% of the Population)
- Average Annual Growth Rate: 1.25%
- Average Residential Lot size is 1-2 acres
- 41 Businesses in the Area
- Many Recreational and Heritage Resources

St. Andrews Population Growth



Information

- For more information on the South St. Andrews Secondary Plan, please contact:

Brock Feenstra, MMM Group Limited

Tel.: (204) 943-3178

E-mail: feenstrab@mmm.ca

~or~

Jennifer Ferguson, Selkirk and District Planning Area Board

Tel.: (204) 482-3717

E-mail: jenniferferguson@selplan.net