

South St. Clements

Design Preference Exercise



Rank the 4 Images on each slide

Please rank the four design images on each slide in order of preference (1 being favourite, 4 being least favourite). See example (right):

3 acre lots

A	B
4	1
2	3

Broomfield, CO 0.3 units / acre

Hollister, CA 0.3 units / acre

Hollister, CA 0.3 units / acre

Golden Valley, AZ 0.3 units / acre

Excerpt from *Visualizing Density* by Julie Campoli and Alex S. MacLean.
© 2007 by the Lincoln Institute of Land Policy, Julie Campoli, and Alex S. MacLean.
Aerial photographs © 2007 Alex S. MacLean.

St. Clements
The place to be

DILLON
CONSULTING

SDPA

Excerpt from *Visualizing Density* by Julie Campoli and Alex S. MacLean.
© 2007 by the Lincoln Institute of Land Policy, Julie Campoli, and Alex S. MacLean.
Aerial photographs © 2007 Alex S. MacLean.



3 acre lots



Broomfield, CO 0.3 units / acre



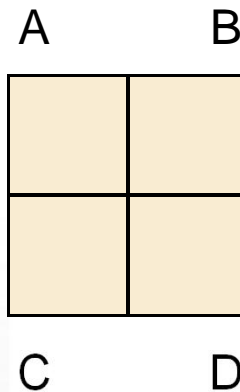
Hollister, CA 0.3 units / acre



Hollister, CA 0.3 units / acre



Golden Valley, AZ 0.3 units / acre



Excerpt from *Visualizing Density* by Julie Campoli and Alex S. MacLean.

© 2007 by the Lincoln Institute of Land Policy, Julie Campoli, and Alex S. MacLean.

Aerial photographs © 2007 Alex S. MacLean.



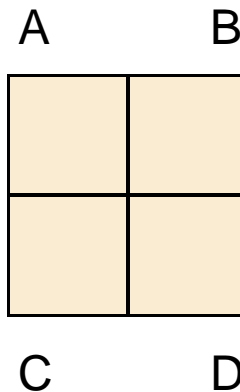
1 acre lots



Tysons Corners, VA 0.9 units / acre



Glendale, AZ 1.0 units / acre



Edinburg, NJ 1.1 units / acre



Grosse Pointe, MI 1.6 units / acre

Excerpt from *Visualizing Density* by Julie Campoli and Alex S. MacLean.

© 2007 by the Lincoln Institute of Land Policy, Julie Campoli, and Alex S. MacLean.

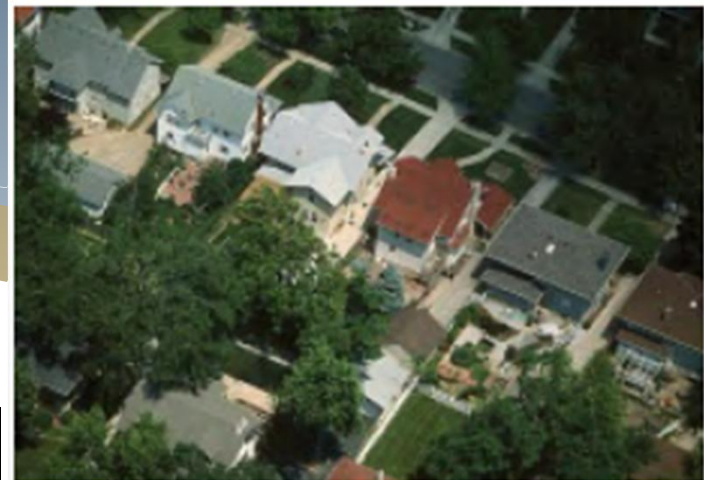
Aerial photographs © 2007 Alex S. MacLean.



3 houses per acre (0.33 acre lots)



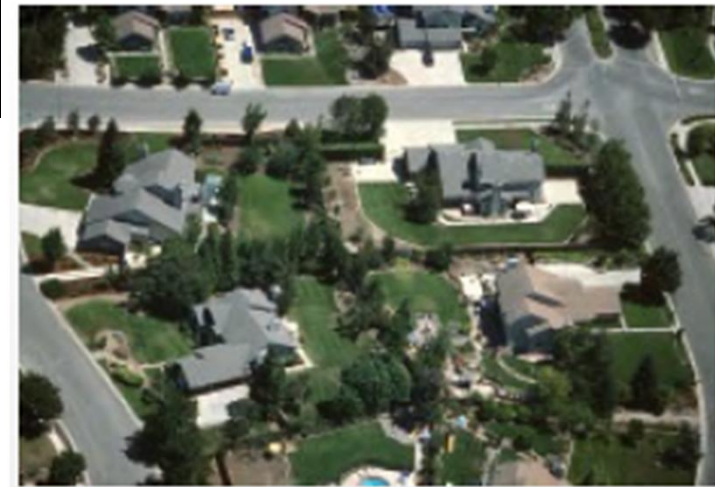
Dallas, TX 3.2 units / acre



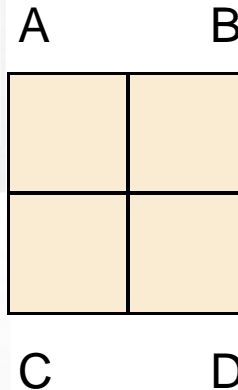
Kansas City, MO 3.5 units / acre



Palos Verdes, CA 3.6 units / acre



Hollister, CA 2.9 units / acre



Excerpt from *Visualizing Density* by Julie Campoli and Alex S. MacLean.

© 2007 by the Lincoln Institute of Land Policy, Julie Campoli, and Alex S. MacLean.

Aerial photographs © 2007 Alex S. MacLean.



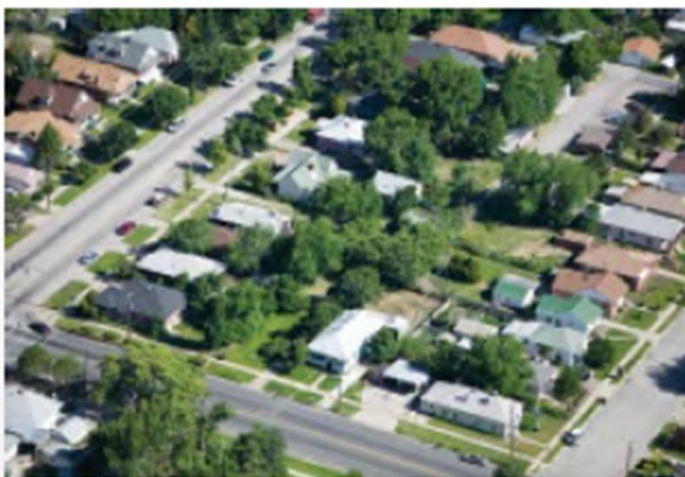
6 houses per acre (0.16 acre lots)



Portland, OR 7.0 units / acre



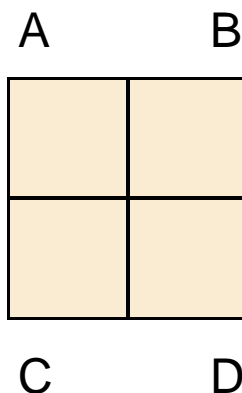
Fairview, OR 6.3 units / acre



Ogden, UT 5.5 units / acre



Radburn, NJ 5.7 units / acre



Excerpt from *Visualizing Density* by Julie Campoli and Alex S. MacLean.

© 2007 by the Lincoln Institute of Land Policy, Julie Campoli, and Alex S. MacLean.

Aerial photographs © 2007 Alex S. MacLean.

