

Community Design Charrette - June 23, 2010

Concept Plans Lockport Secondary Plan and Traffic Management Study

“Lockport Experience Perspective”

A vision for Lockport by charette work groups 1 and 2

Preserve the Red River and World Class Fishery



Expand Walkway on St. Andrews Lock and Dam

Maintain the historic character of the bridge while adding pedestrian and cycling access across the Red River to promote community connections to east Lockport.


Signalized Pedestrian Crossing to Increase Accessibility and Safety



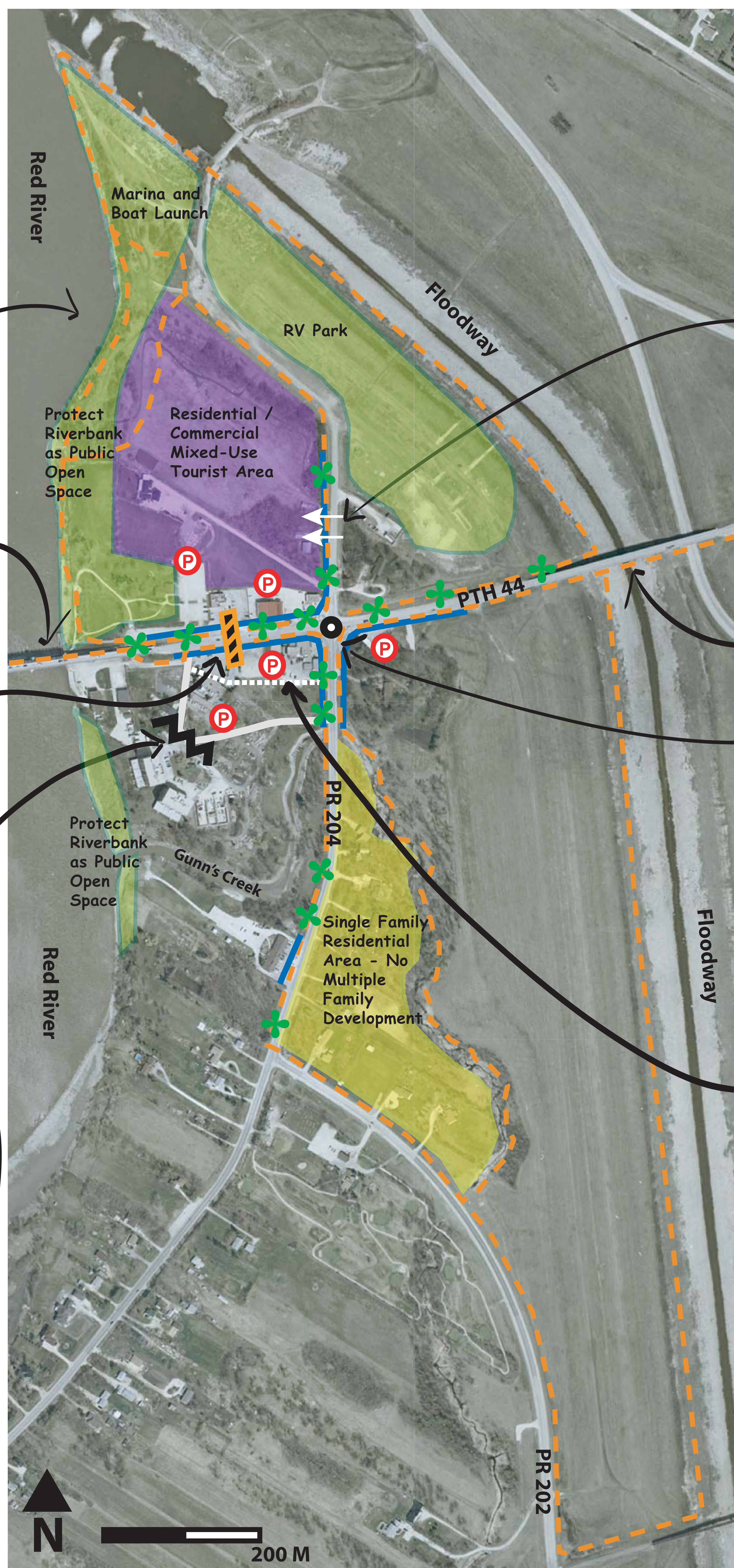

Buffer Between Commercial Area and Condominiums

Patrons of businesses in Lockport and the general public are using the condominiums private access road, which is unsafe for condo residents who propose the closure to vehicle access from Melody Lane.

Make Lockport Beautiful with Streetscape Improvements



Creating beautiful streets and places in Lockport should include: street lighting, street furniture, landscaping and plantings, ground treatments and a signage theme.



Expand Parking to Accommodate Visitors and New Growth



Access to Mixed-Use Development Area From PR 204

Walkway Across Floodway

Capitalize on an opportunity to use the existing PTH 44 bridge infrastructure to create a multi-purpose pedestrian/cycling connection across the floodway.

Roundabout

Slow traffic and make Lockport a safe place for vehicles and pedestrians. This would also be the first roundabout in Manitoba outside of Winnipeg!



Additional Access Roads to Allow Internal Circulation within Commercial Area

Consolidate Access Along PTH 44 and PR 204 to Increase Safety for All Road Users, While Improving Traffic Flow

Pedestrian / Cycling Paths

These include dedicated multi-purpose paths and trails or sidewalks and bike lanes along streets.